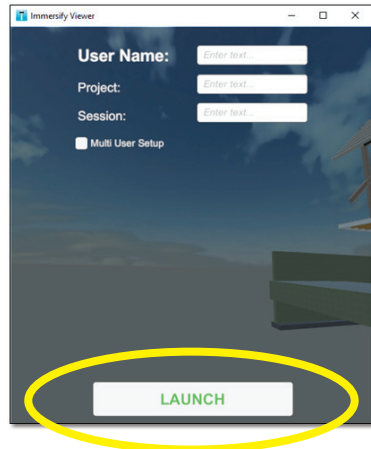
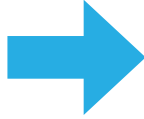
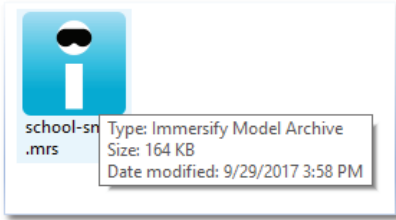


IMMERSIFY

QUICK START GUIDE: DESKTOP / LAPTOP

STEP 1: LAUNCH THE VR MODEL



No need to type anything in. Simply click **Launch** to enter VR!

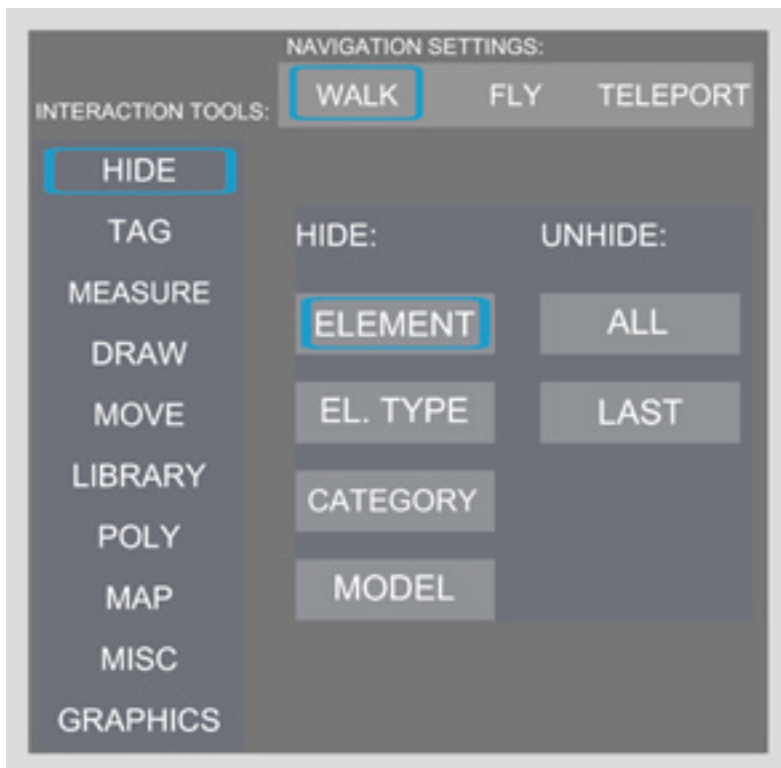
Use the **W, A, S & D** or **arrow** keys on your keyboard to **move**, and point your **mouse** to **steer**.

Click and hold the **left mouse button** to **interact**.



After downloading and installing your free trial of IMMERSIFY, double-click the .MRS file to open it. The **Immersify Viewer** will open.

STEP 2: PRESS F1 FOR THE USER MENU



The **User Menu** is your one-stop-shop for all actions, modes and items. To bring up or hide the **User Menu**, press the **F1** key on your keyboard. To select a menu item, hover your mouse over the button, or click on it.

Each **Interaction Tool** on the left brings up a submenu of adjustable options, controls and settings.

Tip: For optimal viewing on desktop, select **Fly** mode.

Tip: Hold the **Shift** key on your keyboard to move faster.

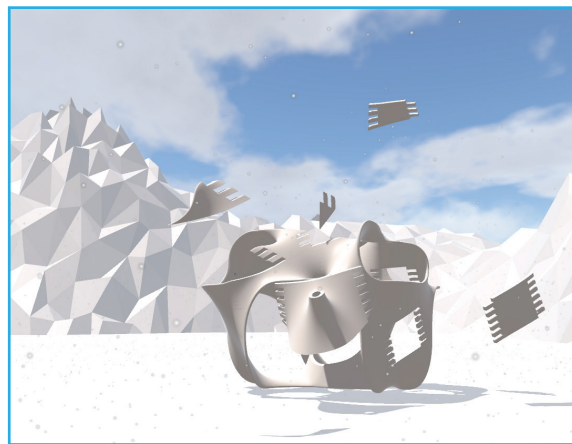
Tip: Press the **H** key on your keyboard to toggle the **shortcuts pane**.

Tip: IMMERSIFY locks your mouse in the viewing window by default. To free your mouse for external use, press the **Escape** key on your keyboard.

STEP 3: EXPLORE! TRY THESE ACTIONS



Place festive 3D content in the virtual environment via the **Library** tool.



Take apart the sculpture and put the pieces back together via the **Move** tool.



Change the time of day via the **Environment** tool.

Looking for more detailed instruction? Visit www.suppletechnologies.com to watch tutorials, download the user manual or talk to our support team!



[suppletechnologies.com](http://www.suppletechnologies.com)

[Twitter](#) [Facebook](#) [Instagram](#) /supplellc